

FDI



CANAPÉ

A cosy type family

FDI Type Foundry

Font Family	Canapé
Designer	Sebastian Nagel
Released	2013
Styles	4
Script Support	Latin Extended

OH, SO SOFT & COSY

5 o'clock tea

Some more milk and sugar?

EARL-GREY, HOT.

Why don't you come with me? I'll show you my

collection of stamps...

Biscuit

**DAMN* good coffee & cherry pie!*

Savouries

a

b

c

d

e

f

g

h

i

j

k

l

m

n

st

o

p

q

r

s

t

u

v

w

x

y

z

1

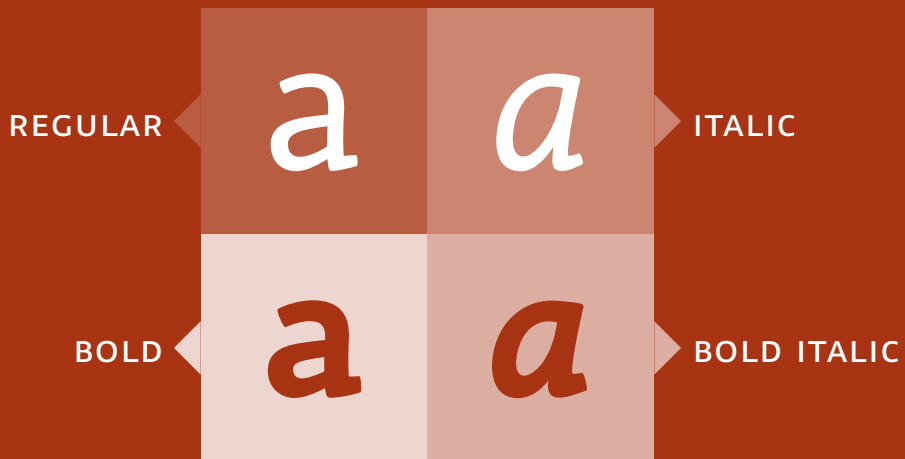
2

3

4

5

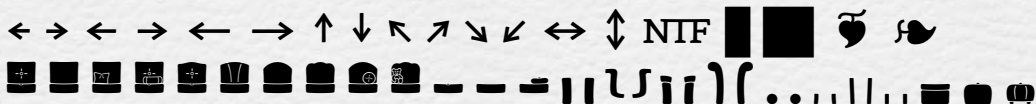
6



LIGATURES

fb ff fh fi fj fk fl ft ffb fff ffh ffi ffj ffk ffl fft fb fh fi fj
fk fl ff ft ffb fsh ffi ffj ffk ffl fft fj tj Th Th Th Th aj ch
ci ck cl ct it sh si sk sl sp st www

GRAPHICAL ELEMENTS



CHARACTER SET—ITALIC STYLES

UPPERCASE

*A B C D E F G H I J K L M N O P Q R S T U V W X Y Z À Á
Â Ã Ä Å Æ Ā Ă Ą Ç Ć Ĉ Ċ Ď Đ È É Ê Ë Ē Ĕ Ė Ę Ě Đ Ğ Ğ
Ġ Ĥ Ħ Ì Í Î Ï Ī Ĵ Ĳ Ĺ Ł Ľ Ñ Ñ Ñ Ñ Ñ Ñ Ò Ó Ô Õ Ö Ø
Ō Ŏ Ő Œ Ŕ Ŗ Ř ř Ŝ ŝ ŝ ŝ ŝ ß ŧ ŧ ŧ ŧ Ũ Ú Û Ü Ŭ ŭ ŭ ŭ
Ŵ Ŷ Ŷ Ŷ Ź Ź Ź 3*

0 1 2 3 4 5 6 7 8 9 + - = () . , a b c d e e è f g h i j k l m n o p q r s t u v w x y z
0 1 2 3 4 5 6 7 8 9 + - = () . , a b c d e e è f g h i j k l m n o p q r s t u v w x y z

0 1 2 3 4 5 6 7 8 9 + - = () . , a b c d e e è f g h i j k l m n o p q r s t u v w x y z
0 1 2 3 4 5 6 7 8 9 + - = () . , a b c d e e è f g h i j k l m n o p q r s t u v w x y z

0/0 0/00 1/2 1/3 2/3 1/4 3/4 1/5 2/5 3/5 4/5 1/6 5/6 1/8 3/8 5/8 7/8 1/
0 1 2 3 4 5 6 7 8 9 _

LIGATURES

*fb ff fh fi fj fk fl ft ffb fff ffh ffi ffj ffk ffl fft fb fh fi fj fk fl ff
ft ffb fsh ffi ffj fsk fsl fst fz tz Th Th Th Th aj ch ci ck cl ct it
sh si sk sl sp st www*

*fb ff fh fi fj fk fl ft ffb fff ffh ffi ffj ffk ffl fft
fb fh fi fj fk fl ff ft ffb fsh ffi ffj fsk fsl fst
fz tz Th Th Th Fh aj ch ci ck cl ct it sh si sk sl sp st www*

GRAPHICAL ELEMENTS

← → ← → ← → ↑ ↓ ↖ ↗ ↘ ↙ ↔ ↕ NTF ■ ■ ♡ ♣

REGULAR	ITALIC	BOLD	BOLD ITALIC	
AHO2	<i>AHO2</i>	AHO2	<i>AHO2</i>	CAPITALS
	<i>AHO2</i>		<i>AHO2</i>	SWASH CAPITALS
aho2	<i>aho2</i>	aho2	<i>aho2</i>	LOWER CASE
	<i>aho2</i>		<i>aho2</i>	SWASH LOWER CASE
AHO2	<i>AHO2</i>	AHO2	<i>AHO2</i>	SMALL CAPS
aho2	<i>aho2</i>	aho2	<i>aho2</i>	ORIDNALS

The Alphabets

Each font of the Canapé family contains four or six alphabets, accessible via OpenType features and the glyph palette.

PROPORTIONAL FIGURES

12345678900

12345678900

12345678900*

12345678900*

12345678900

1234567890

1234567890

TABULAR FIGURES

1|2|3|4|5|6|7|8|9|0|0

1|2|3|4|5|6|7|8|9|0|0

LINING

OLDSTYLE

SWASH LINING (*ITALICS)

SWASH OLDSTYLE (*ITALICS)

SMALL CAPS

ORDINALS, FRACTIONS, ...

NUT FRACTIONS

1 2 3 4 5 6 7 8 9 0

NEGATIVE

Figure Sets

Each font of the Canapé family contains eight or ten figure sets, accessible via OpenType features or the glyph palette.

Metrics and class-based kerning

Carefully crafted metrics and class kerning combinations guarantee optimal spacing for almost any case, minimizing the need for manual corrections by the user of the font.

HALT »Tomato?»

HALT »Tomato?»
↑ ↑ ↑ ↑ ↑ ↑ ↑ ↑

¿¡AB!?.(DE-F)

¿¡AB!?.(DE-F)

Case-sensitive forms

Punctuation, mathematical operators, brackets and so on are replaced or repositioned for optimal alignment when text is set to »all capitals«. In addition the letter spacing is automatically increased.

Small Caps & All Caps

... changes small letters and punctuation to small capitals. "All small caps" also replaces figures, currency symbols and some special characters with small cap alternates.

AB & ¿Def? 163€

AB & ¿DEF? 163€

Canapé serif ch ffi?

Canapé serif ċh ffi?

Swashes (Italics only)

Replaces capitals, small letters, figures and some other characters from the standards italics with swash glyphs—especially useful for display use.

Standard ligatures

Dozens of ligatures for typical problematic letter pairs, including ligatures for historic forms.

fb ff fh fi fj fk fl

fb ff fh fi fj fk fl

ch ck cl ct sh sk st

ċh ċk ċl ċt śh śk śt

Discretionary Ligatures

Decorative ligatures for display use.

Contextual alternates

Contextual improvement of
details for Th und www.

Th Ṭh Ťh Ṧh www.

Th Ṭh Ťh Ṧh www.

Mlle 1ère 2nd St.

Mlle 1ère 2nd St.

Ordinals

Smaller letterforms for use as
ordinals and superscript letter.
A complete set of small letters
(a–z, è) as well as punctuation
is available.

Capital Sharp S

... available as option for caps
and small caps typesetting.

GROßBAUSTELLE

STRAßENBAHN

Strafze Platz Weft

Strafze Platz Weft

Historical forms

Historical forms for z and s and their ligatures are available through the stylistic set sso2.

FRAC, SUPS, SINP, NUMR, DNOM

A complete set of figures for fractions, indices, superscript, inferiors, numerators and denominators.

$1/8 C_4H_8O_3 n(3,2n+i)$

$1/8 C_4H_8O_3 n(3,2n+i)$

-> --> ---> <| <-> \>

→ → → ↑ ↔ ↘

Arrows

Canapé includes a set of arrows, which can also be typed in when the stylistic set SSo4 is activated.

FDI

fdi-type.de