

THIS IS A SPECIMEN BY THE

Herzberg
Design Co

OF THE TYPEFACE NAMED

Thanatos

AND REMEMBER

“FORTUNE FAVORS THE GOOFY”

INDEX

① About	p. 2
② Family Overview	p. 3–5
③ Style Specimens	p. 6–37
④ Style Combinations	p. 38–40
⑤ Character Set	p. 41–45
⑥ OpenType Features	p. 45–48
⑦ Languages	p. 49

ABOUT

Name: *Thanatos*

Styles: 48

Year Released: 2023

Genre: *Serif*

Formats: *Variable TTF, OTF, TTF, WOFF, WOFF2*

Designer: *Matthijs Herzberg*

A typeface two years in the making; my most ambitious project to date. Eight weights, three optical sizes, in Roman and Italic. Chuck-full of opentype features? You bet.

Thanatos has roots in calligraphy and wood carving (a skill I've tried to pick up but haven't gotten very good at)—as shown by the ragged cuts on circular strokes, broken counterforms, and subtly concave stems.

Originally conceived as a custom typeface for a short horror film, Thanatos has sharp features and knife-like serifs. However, this aesthetic isn't inherently aggressive—it lends an air of craftsmanship and solidity. No coincidence, as a strong influence on Thanatos is Berthold Wolpe's 1930's Arts & Crafts banger Albertus (used as a credit font throughout Jon Carpenter's entire filmography).

Said influence shows most clearly in Thanatos' contrast structure: while horizontal and vertical strokes are almost even in thickness (like a sans serif), connections between strokes, like between the bowls of the "g" or the shoulder onto the stem of "n", are razor sharp.

These delicate features are awesome for display sizes, but become muddy when set smaller. Hence, Thanatos Text was developed, which features more robust stroke connections and serifs, as well as wider forms and more generous spacing. The Deck cut forms a welcome solution for all those pesky in-between cases.

Thanatos is the most versatile type family I've yet released, but does not sacrifice character one bit to do so. I hope that it can help you to focus your death drive on the things important in life.



Father & Son ↑

FAMILY OVERVIEW — 8 Weights

Thin

Facilmente

Light

Minimizar

Book

Exigirmos

Regular

Hilariante

Semi
Bold

Aguerrirá

Bold

Nomeado

Extra
Bold

Sortiram

Black

Distraíra

As weights increase, the proportions of letterforms get wider. This is more noticeable in the display cut, and less so in the text cut.



FAMILY OVERVIEW — 3 Optical Sizes Display, Deck, Text

As their names indicate, the display cut is meant for large sizes (48pt and up), whereas the text cut is for smaller stuff—generally below 24 pt or so. The deck cut sits in between, and shines around 24-48 pt. That said, it is all dependant on the medium and situation, so take these as recommendations, not rules. In addition, the rough forms of the text cut can look great for display too.

Comparison at 96 pt

Display *Narrower letterforms* *Tighter Spacing*
Sharp connections *Pointy serifs*

Deck

Text *Wider letterforms* *Looser Spacing*
Thicker connections *Blunted serifs*

Comparison at 14 pt

Display **As Johannes Gutenberg's movable-type printing system gained...**
Muddy!

Deck **As Johannes Gutenberg's movable-type printing system gained...**

Text **As Johannes Gutenberg's movable-type printing system gained...**
Clear!



FAMILY OVERVIEW — 2 Styles Roman & Italic

The Italic uppercase uses the same forms as the Roman, but slanted (and optically adjusted to look nice). The lowercase, however, uses a different ductus (a fancy word for a calligraphic model), which emulates cursive writing motions, but still with the same parameters as the roman to help the two relate. In some letters, this is very noticeable. In others, it's very very noticeable.

Broken stroke connections



Entirely different forms





STYLES display thin 96pt

BARRACÃO

PANTANAL

FEITICEIRO

procedência

emuladoras

solidificação

STYLES display thin italic 96pt

GALICISMO

ESFOMEAR

CLASSIFICÁ

quilométrico

dodecagonal

infringíamos



STYLES display light 96pt

RETIRIONS

LAMPÂTES

MYSTIQUE

multiplions

carmineras

chausserait



STYLES display light italic 96pt

ÉCLIPSANT

HISTRIONS

CONCLUEZ

dilapideriez

secrètement

chamailleur



STYLES display book 96pt

SUBLAYER

ACQUIRER

SEAPLANE

selfdefence

translation

propagates



STYLES display book italic 96pt

PUSTULAR

REVOLVED

MENISCUS

occasioning

somnolence

embryology



STYLES display regular 96pt

BIEDEREN

BEWÄHRE

VORSIEHT

zieldateien

stillgelegte

heimholen



STYLES display italic 96pt

UUFERLAGE

ELBFAHRT

RUBRIKEN

kreuzkraut

sportboden

hasenfüßig



STYLES display semi bold 96pt

PAPUIAȘEI

FIGURATE

MOZOLEA

criminalul

pân-gărire

pecizionez



STYLES display semi bold italic 96pt

NEPHRITE

GÂNDEȘTI

PARAVINT

compozitie

decametrii

reordonări



STYLES display bold 96pt

REVOQUE

APÓCIMA

CHURERO

desmoñar

solombraía

perfoliada



STYLES display bold italic 96pt

EJECUTAR

COLOIDAL

ART DÉCO

cascabullo

baldadura

aplaciente



STYLES display extra bold 96pt

ENGELTJE
VAKBLAD
ADERLIJK
kruish heer
inpekelen
meidagen



STYLES display extra bold italic 96pt

KOPSTUUK

BEDWING

LASTDIER

vermijden

niet-exact

wolharige

STYLES display black 96pt

ESTRACH

DATALNY

NAJEŻALI

niewinny

wyruszył

ścibolona

HOJEREM

O CYKASZ

SFAJCZEŃ

półkowaci

omdlewaj

ciągarnia

**STYLES** Thin Deck

42pt

Titan or OLCF-3 was a cool supercomputer built by *Cray at Oak Ridge National Laboratory at Virginia Tech*

34pt

Titan was an upgrade of Jaguar, a previous supercomputer at Oak Ridge, *that uses graphics processing units (GPUs). These are named for*

26pt

The upgrade began in October 2011, commenced stability testing in October 2012 and it became available to researchers in *early 2013. The initial cost of the upgrade was US\$60 million, funded primarily by the United States Department of Energy.*

STYLES Light Deck

42pt

Dywizja była pierwszą wielką jednostką Wojska Polskiego sformowaną we Francji. Jej formowanie

34pt

Wtedy to w uzgodnieniu z rządem francuskim ogłoszono pobór polskich obywateli mieszkających we Francji oraz zaciąg wśród

26pt

3 listopada 1939 Naczelnny Wódz gen. Władysław Sikorski wydał formalny rozkaz o sformowaniu 1 Dywizji Piechoty. Na dowódcę dywizji gen. Sikorski wyznaczył płk. Stanisława Maczka, ówczesnego dowódcę oddziałów polskich w Coëtquidanzizp

STYLES Book Deck

42pt

Han var 1500-tallets mest betydningsfulde repræsentant for *renæssancehumanismen* og fik tilnavnet

34pt

Han var en glimrende latinist, og han stod for en banebrydende *udgivelse af Det Nye Testamente på det originale oldgræske sprog*

26pt

Erasmus levede på reformationens tid. Han var, ligesom Martin Luther, kritisk indstillet over for de kirkelige misbrug i *den katolske kirke, og han forsøgte at reformere kirken. Da det kom til stykket, kunne han dog ikke tilslutte sig Luther og*

**STYLES** Regular Deck

42pt

Un cantautor es un músico, por lo general, un solista, que escribe, compone y canta de sus propias

34pt

Aunque hay muchos cantantes de diversos géneros que escriben sus propias canciones, el término cantautor suele usarse

26pt

El género musical característico del cantautor se conoce como canción de autor. Durante un tiempo, a este tipo de música se lo llamó canción protesta. Hoy en día el género se encuentra menos cargado de connotaciones críticas o

STYLES Semi Bold Deck

42pt

La création de lieux de culte autour du mont Lempuyang est considérée comme antérieure

34pt

Les temples du mont Lempuyang, dont le Pura Lempuyang Luhur est le temple le plus élevé de la région, sont regroupés

26pt

Les groupes de temples sont considérés comme faisant partie du Sad Kahyangan Jagad, ou des «six sanctuaires du monde», les six lieux de culte les plus sacrés de Bali. Selon les croyances balinaises, ils sont les points

STYLES Bold Deck

42pt

**Die Straßenbahn der
Gemeinde Heiligensee
*an der Havel war ein
ehemals selbstständiger***

34pt

**Die Gesellschaft eröffnete am
29. Mai 1913 zwei Straßen-
*bahnlinien, die von Tegel nach
Heiligensee sowie über Konrad***

26pt

**Am 1. Oktober 1920 wurden die Ge-
meinden Heiligensee und Tegel im
Zuge des Groß-Berlin-Gesetzes nach
*Berlin eingemeindet und dem Verwal-
tungsbezirk Reinickendorf angeglie-
dert, die Gemeindebahn ging am selben***

STYLES Extra Bold Deck

42pt

A principal língua falada no país é o espanhol (94% da população). Entre os idiomas oficiais

34pt

Além do território continental, o Equador possui também as ilhas Galápagos, a cerca de 1 000 km do território conti-

26pt

O país é o lar de uma grande variedade de espécies endêmicas, muitas delas nas ilhas Galápagos. Esta diversidade de espécies faz do Equador um dos dezessete países megadiversos do mundo, sendo considerado o



STYLES Black Deck

42pt

Een gehucht is een woonplaats die kleiner is dan een dorp. Als verschil wordt soms gen...

34pt

Dit gaat niet altijd op en feitelijk is er geen duidelijke grens (meer) tussen beide categorieën te trekken. Het is

26pt

Het woord gehucht stamt af van het collectivum van hoeve: "gehofte". Dit is omdat gehuchten rond een of meer alleenstaande hoeves ontstonden. Die waren opgericht te midden van woeste grond,

**STYLES** Thin Text

18pt

La forma più arcaica di greco che ci sia nota attraverso la scrittura è il miceneo, la lingua parlata dalle classi dominanti nei centri palaziali della civiltà micenea; altre forme di greco, di cui alcune in parte note attraverso testimonianze, *coesistevano accanto al miceneo. Alla fine del II millennio a.C. questa lingua regredì a causa del crollo della civiltà micenea, lasciando il posto a ciò che chiamiamo greco antico, ossia un insieme di varianti mutualmente intelligibili che prendono il nome di*

14pt

Il greco antico è stato indubbiamente una delle lingue più importanti nella storia della cultura dell'umanità: è stata la lingua di Omero, dei primi filosofi e dei primi scrittori dell'occidente. Termini del greco antico sono stati presi in prestito dai Romani nella *lingua latina e attraverso questi sono arrivati fino ai nostri giorni. La nomenclatura binomiale, sebbene sia espressa in latino, attinge fortemente dal vocabolario del greco antico. Numerosi concetti tipici della contemporaneità, come quello di democrazia, sono nati nella Grecia*

12pt

Come il greco moderno, che ne è una profonda evoluzione, il greco antico era una lingua indoeuropea le cui origini sono ancora oggi difficili da chiarire: i diversi dialetti parlati in Grecia avevano una comune radice *che i linguisti hanno chiamato protogreco ed erano diffusi, prima della migrazione dorica, nell'area balcanica. Rintracciare un antenato precedente risulta molto difficoltoso, armena (alcuni parlano così di un progenitore chiamato*

10pt

Si può pensare che il proto-greco abbia perso la propria unità linguistica al tempo dell'invasione dorica, a seguito della quale, in un periodo compreso fra il 1200 e il 1000 a.C., si è avuto lo sviluppo di numerose varianti di greco antico, ricordate come dialetti greci antichi. Le prime attestazioni del greco antico *compaiono attorno all'VIII secolo a.C. con lo sviluppo di un determinato tipo di alfabeto. La perdita dell'unità linguistica porta allo sviluppo di diverse varietà di greco, ciascuna delle quali deriva il proprio nome da quello della popolazione greca in cui era parlata: così, il dialetto dorico era parlato dai Dori, l'eolico dagli*

STYLES Light Text

18pt

Bereits die Kelten tranken selbst erzeugten Wein. Möglicherweise pressten und vergärten sie Früchte von Wildreben, die im Moselraum schon in der Jungsteinzeit verbreitet waren. Ob sie deren Kultivierung und Veredlung zu Weintrauben beherrschten, ist aber archäobotanisch erst für die spätere, die galloromanische Zeit nachgewiesen. Wein in Amphoren importierten sie, archäologisch belegt, noch weit bis in die Zeiten der römischen Herrschaft. In der Folge der Gaius

14pt

Der landwirtschaftliche Weinbau in Deutschland beginnt, seit 1977 archäologisch nachgewiesen, mit den Ausgrabungen römerzeitlicher Kelteranlagen. Bei Erdbewegungen zu Flurbereinigungen und Umlegungsarbeiten alter Weinberge an der Mittelmosel wurden Anlagen gefunden und erforscht, die auf einen Anbau ab dem 1. Jahrhundert, bereits in Hang- bzw. Steillagen, hinweisen. Ab 1979 wurden ähnliche Funde in der Pfalz (Bad Dürkheim Ungstein, Wachenheim) gemacht, die den Weinbau dort schon in

12pt

Die Lex Salica (Pactus Legis Salicae) wurde 507–511 auf Anordnung des Merowingerkönigs Chlodwig I. verfasst, womit sie eines der ältesten erhaltenen Gesetzbücher ist. Sie zählt zu den germanischen Stammesrechten. Der Raub von Rebstöcken wird dabei dem Raub von Obstgehölz gleichgestellt und mit einer Strafe von 600 Denier belegt. In seinem Reisebericht *De navigio suo* aus dem Jahr 588 über seine Moselfahrt von

10pt

„Ringsum bieten dem Blick mit drohenden Gipfeln sich Berghöhn, Wo zu den Wolken hinan steigt das schroffe Geklipp, Hoch zu den Felsen empor senkrecht aufstrebend die Gipfel, und das rauhe Gestein, himmelan thürmt es sich auf. Dennoch bezwingt man, Frucht zu erbringen den starrenden Schiefer, Selbst der Felsen gebiert und es entströmet der Wein. Allwärts siehst du die Höh'n umkleidet mit grünenden Reben, und sanft lächelnde Luft spielet der Rank' im Gelock. Dicht in Zeilen gepflanzt in das Schiefergestein ist der Rebstock, und an die Brauen des Berg's zieh'n sich begrenzte Geländ'. Anbau lacht aus

STYLES Book Text

18pt

Le Frison (frison occidental : Frysk Hynder, néerlandais : Fries) est une race de chevaux de selle et de chevaux carrossiers originaire de la Frise, une province des Pays-Bas dont il tire son nom. Il porte toujours une robe noire, d'où son surnom, « a perle noire ». Bien que des origines anciennes lui soient souvent prêtées, ce cheval de prestige est réellement défini lors de la constitution de son registre généalogique sous l'impulsion de l'aristocratie frisonne en 1879, dans le contexte

14pt

Il est ensuite menacé de disparition, en raison de l'engouement pour le cheval de trait lourd à la fin du XIXe siècle. Il retrouve la popularité à la fin du XXe siècle, au point que le cheptel d'environ 60 000 têtes en 2012 s'est diffusé vers une cinquantaine de pays. En plus de sa robe noire, le Frison se caractérise par son modèle baroque, influencé par les chevaux ibériques. Tous les Frison actuels descendent d'un nombre particulièrement réduit d'étalons fondateurs, ce qui a généré une

12pt

Le nom du Frison en frison occidental est Frysk Hynder et en néerlandais Fries paard, le nom en anglais étant Friesian. Il ne doit pas être confondu avec le Frison oriental, qui est une race de chevaux distincte : il est nommé «Frison occidental» par certaines sources pour faciliter cette distinction. Son nom provient de sa région d'origine, la Frise, qui se distingue du reste du pays, les Pays-Bas, par «une certaine réserve».

10pt

Comme beaucoup d'autres races de chevaux, le Frison a vu son histoire être régulièrement déformée, notamment sous l'influence du nationalisme qui a poussé à lui rechercher des origines les plus anciennes possibles, en les ancrant dans le territoire. De plus, les chevaux désignés sous le nom de «Frison» ont évolué, passant du statut de montures de guerre à celui de chevaux de manège, puis de carrossiers, et enfin de chevaux de trait¹¹. La plupart des caractéristiques du Frison actuel sont définies au cours du XIXe siècle. En effet, la Frise a appartenu à différents. États au cours de son

STYLES Regular Text

18pt

Belgiju čini nizina uz obalu Sjevernog mora i Kanala, središnji brežuljkast ravnjak i gorje Ardeni na jugoistoku. Uz nisku i pjeskovitu obalu pruža se Flandrijska nizina (Vlaanderen). Duž obale obrubljena je pojasom *dina (visine do 30 m i širine do 2.5 km), koje od poplave mora zaštićuju polderi- isušeno močvarno područje. Polderi prelaze prema unutrašnjosti u pješčano-glinovitu (20–50 m) nizinu Flandrije, s brežuljcima visine do 150 m.*

14pt

Sjeveroistočno od rijeke Schlede na poldere se nastavlja pješčani kempenski ravnjak visine do 100 m (uz rijeku Meuse). Središnji valoviti ravnjak pruža se između Schlede odnosno Flandrijske nizine na zapadu, kempenskog ravnjaka *na sjeveru i dolina rijeke Meuse- Sambre na istoku. Izdiže se od 80 m na sjeveru do 200 m na jugu. Prekriven je pješčanim i glinovitim naslagama, a na jugu plodnim praporom. Jugoistočno od doline Meuse- Sambre prostire se Visoka Belgija s pješča*

12pt

Belgija ima okeansku klimu; uticaj zračnih masa s Atlantika jak je u primorju i središnjem dijelu zemlje. Zime su blage i maglovite, a ljeta pro hladna s rijetkim kišama. Srednja januarska temperatura *snižava se od obale (4°C) prema unutrašnjosti (0°C u Ardenima) dok je srednja julska temperatura najviša u središnjoj Belgiji (do 22 °C), a najniža u planinskom području (14 °C). Godišnja količina padalina*

10pt

Belgija je parlamentarna ustavna i nasljedna monarhija. Ustav je donesen 7. februara 1831. te je više puta dopunjavao. Ustavnim promjenama iz 1970., 1971., 1974. i 1980., a posebno ustavnim zakonodavstvom iz 1993., Belgija je federalizirana. Novim prvim člankom ustava Belgija je definisana kao federativna država sastavljena od tri autonomne regije. U zajedničkoj nadležnosti su: vojska, monetarna i vanjska politika, a sve ostalo prenosi se na regije. Donošenjem jezičnih zakona u 1960-im godinama, Belgija je postupno preuređena u skladu sa složenim sistemom stanovništva.



STYLES Semi Bold Text

18pt

Likernôch 27 persint fan it oerflak is bosk; it is dêrmei it boskrykste lân fan de Jeropeeske Uny. Sintraal Frankryk wurdt dominearre troch it Sintraal Massyf, in platoberchte mei as heechste punt de Puy de Sancy (1,886 m). Fierder binne der yn it suden noch de Sevensen te finen, ien fan de sân nasjonale parken fan Frankryk. Korsika is it grutste Frânske eilân yn de Middellânske See mei in oerflak fan 8,680 km². It eilân is berchachtich

14pt

Op de grins mei Switserlân leit de Mar fan Genève. Fan Switserlân út, troch dit mar en tusken de Alpen en it Sintraal Massyf troch rint de wylde Rône, nei de Middellânske see. Westlik fan it Sintraal Massyf leit de leechflakte fan Akwitaanje, dêr't de Garonne en de Dordogne nei de Atlantyske Oseaan trochhinne rinne. Noardliker rint de Loire yn deselde rjochting. Troch Noard-Frankryk rint de Seine, fan de omkriten fan Dijon ôf, troch Parys nei it noardwesten en komt by

12pt

De grinzen fan it hjoeddeiske Frankryk rinne hast lykop mei de grinzen fan Galje, dêr't de Keltyske Galjers eartiids wennen. Julius Caesar fan it Romeinske Ryk ferovere Galje yn de 1e iuw, en de Galjers namen de Romaanske taal (Latyn, de grûnslach foar it Frânsk) en kultuer oer. It Kristendom waard yn 'e 2e en 3e iuw it nije leauwen, dat yn de fjirde en fyfde iuw rûnom sa djip woartele wie dat

10pt

Yn 'e santjinde iuw rekke it Frânske keningskip mei Loadewyk XIV op it hichtepunt. Yn 'e santjinde en achttjinde iuw wie dat mei Frânske taal lyksa, dy waard yn literêre rûnten en bestjoeren yn it bûtenlân brûkt. Oan 'e ein fan de 18e iuw hie Frankryk koloanjes by de roes yn Noard- en Súd Amearika, Afrika en Aazje. Nei de Frânske Revolúsje fan 1789 waard Frankryk in republyk. De Frânske republyk bleau net sa lang want yn 1799 kaam Napoleon I oan 'e macht. Napoleon waard letter keizer fan it Earste Frânske Ryk (1804–1814). Yn 1815 waard Napoleon yn 'e

**STYLES** Bold Text

18pt

Kültürel merkez oluşunun yanı sıra zarif binalarıyla da bilinir. Baltık Denizi kıyısında Neva Nehri üzerindeki 42 ada üzerine yayılmıştır. Çar I. Petro tarafından 16 Mayıs 1703'te Rus Çarlığı'nın Avrupa'ya açılan kapısı olması amacıyla kurulan şehir, 200 yıl Rus Çarlığı'nın başkentliğini yapmıştır. 1914-1924 yılları arasında, yani çoğunluğunu I. Dünya Savaşı ile Rus İç Savaşı'nın kapsadığı dönemde Rusya'nın Almanya ile savaşmasın

14pt

1917 Büyük Ekim Sosyalist Devrimi'nden sonra Bolşevikler Mart 1918'de Moskova'yı başkent yapmıştır. Petrograd tarihi bir şehir olarak önemini korusa da siyasi ve ekonomik açıdan ülkenin ikinci önemli şehri konumuna düşmüştür. Şehir 1924-1991 yılları arasında yani Sovyetler Birliği döneminde Leningrad olarak adlandırılmıştır. 1991 yılında Sovyetler Birliği'nin dağılmasıyla Boris Yeltsin yönetimi, şehrin ismini yeniden Sankt-Peterburg olarak

12pt

Bir Doğu şehri sayılan Moskova'nın aksine Sankt-Peterburg, 5 milyonluk nüfusuyla daha "Avrupalı"dir ve kuruluş amacı olan "Avrupa'ya açılan kapı" olma amacını gerçekleştirmiştir. Ayrıca bir rivayete göre kurulduğu zaman Venedik ve Roma'nın bir sentezi olması düşünülmüştür. [kaynak belirtilmeli]Geniş bulvarları, dingin suları, köprüleri ve çarlık mimarisinin bazı örnekleri,

10pt

Sankt-Peterburg Baltık Denizi'nin Finlandiya Körfezi'nde Neva Körfezi kıyıları ile Neva Nehri deltasında bulunan adalar üzerinde bulunan rakımı düşük orta "tayga" bölgesinde kurulmuştur. Bu şehirleşmiş adalar arasında en büyükleri Neva Körfezinde (Obvodniy kanalı ile Fontanka arasında bulunan Körfezdeki Kotin) insan yapısı adalar ile doğal Vasilyevskiy Petrogradskiy ve Dekabristov adalarıdır. Krestovsky, Yelagin ve Kamenny adaları ise park alanlarıdır. Şehrin kuzeyinde bulunan Karelya Yarımadası şehrin popüler

**STYLES** Extra Bold Text

18pt

Næstu eyjar eru Vanúatú í vestri, franska eyjan Nýja-Kaledónía í suðvestri, nýsjálenska eyjan Kermadec í suðaustri, Tonga í austri, Samóaeyjar og Wallis- og Fútúnaeyjar í norðaustri og Túvalú í norðri. Ríkið er á eyjaklasa sem í eru meira en 330 eyjar, þar af 110 byggðar, og yfir 500 smáeyjar. Heildarlandsvæði eyjanna er 18.300 ferkílómetrar. Ysti eyjaklasinn er Ono-i-Lau. Um 87% íbúanna búa á tveimur stærstu eyjunum, Viti

14pt

Eyjarnar hafa verið byggðar mönnum frá því á öðru árbúsundinu f.Kr., fyrst af Ástrónesum og síðar Melanesum. Hollenskir og breskir landkönnuðir komu til eyjanna á 17. og 18. öld. Bretar gerðu eyjarnar að nýlendu árið 1874 og fluttu þangað verkamenn frá Indlandi til að vinna á sykurplantekrum. Landið fékk sjálfstæði árið 1970. Eftir röð valdarána árið 1987 lýsti herforingjastjórnin yfir stofnun lýðveldis. Eftir valdarán 2006 tók yfirflotaforinginn

12pt

Fidjví er staðsett miðsvæðis í Suðvestur-Kyrrahafi, á milli Vanúatú og Tonga. Eyjarnar liggja milli 176°56' austur og 178°12' vestur. Þær ná yfir um 1.300.000 ferkílómetra svæði, en aðeins 1,5% þess er á þurru landi. 180. lengdarbaugur liggur um Taveuni en daglínan sveigist um eyjarnar til að sami tími (UTC+12) sé á þeim öllum. Ef Rotuma er undanskilin liggur eyjaklasinn

10pt

Land Fidjví er um 18.272 ferkílómetrar á 332 (þar af 106 byggðum) og 522 smáeyjum. Flestir íbúanna búa á tveimur eyjum, Viti Levu og Vanua Levu, sem samanlagt eru $\frac{2}{3}$ af þurrlendi eyjaklasans. Eyjarnar eru fjallendar og þaktar þéttum hitabeltisfrumskógi. Hæsti tindur eyjanna er Tomanivi-fjall á Viti Levu, 1.324 metrar á hæð. Höfuðborgin, Suva, er á Viti levu, og þar eru líka önnur stærsta borgin, Lautoka, og sú þriðja stærsta, Nadi, þar sem alþjóðaflugvöllurinn er. Helstu bæir á Vanua Levu eru Labasa og Savusavu.

**STYLES** Black Text

18pt

La Constitución Política de los Estados Unidos Mexicanos de 1917 es la carta magna y norma fundamental, establecida para regir jurídicamente al país, la cual fija los límites y define las relaciones entre los poderes de la federación: poder legislativo, ejecutivo y judicial, entre los tres órdenes diferenciados del gobierno: el federal, estatal y municipal, y entre todos aquellos y los ciudadanos. Así mismo, fija las bases

14pt

En total, el texto constitucional cuenta con nueve Títulos que contienen 136 artículos y 19 transitorios. El texto sigue los lineamientos clásicos de las doctrinas políticas al contar con una parte dogmática, que abarca los primeros 38 artículos y establece derechos y obligaciones, y una parte orgánica, contenida en los 98 artículos restantes y que define la organización de los poderes públicos. Tuvo como precedentes la Constitución de Apa-

12pt

17 de agosto de 1901, los hermanos Flores Magón fundaron el periódico jurídico de México Regeneración, desde el cual criticaban la corrupción del sistema judicial del régimen del general Porfirio Díaz, lo que los llevó a la cárcel. En 1902, los Flores Magón y un grupo de liberales arrendaron el periódico El Hijo del Ahuizote. En 1903, en el cuadragésimo sexto aniversario

10pt

Al paso del tiempo, las críticas y las condiciones del país desataron diversos conflictos que, junto al resultado de las elecciones de 1910, dieron como resultado el inicio, el 20 de noviembre de ese año, del conflicto armado conocido como la Revolución mexicana de 1910. Según los Tratados de Ciudad Juárez, tras la renuncia de Porfirio Díaz, Francisco León de la Barra ocupó la presidencia de México interinamente hasta que pudieran llevarse a cabo elecciones. León de la Barra entregó la presidencia a Francisco I.

STYLE COMBINATIONS

Albertus (typeface)

FROM WIKIPEDIA, THE FREE ENCYCLOPEDIA

Albertus is a glyphic serif display typeface designed by Berthold Wolpe in the period 1932 to 1940 for the British branch of the printing company Monotype.

HISTORY

Wolpe named the font after *Albertus Magnus*, the thirteenth-century German philosopher and theologian.

Wolpe studied as a metal engraver, and *Albertus* was modelled to resemble letters carved into bronze. The face began as titling capitals. Eventually a lowercase roman was added, and later a strongly cursive, narrow italic. *Albertus* has slight glyphic serifs. It is available in light and italic varieties.

The project began in 1932.^[1] Titling caps were released first, and the **Monotype Recorder** of summer 1935 presented the capitals as an advance showing.^[2] Other characters and a lower case were added by 1940. *Albertus* has remained popular since its release and since the end of mass use of metal type phototypesetting and digital versions have been released.

CHARACTERISTICS

- In the uppercase "M" the middle strokes descend only partway, not reaching the baseline, in the default version.
- The uppercase "U" has a stem on the right side.
- Figures are lining.

In the metal type period, *Albertus* was offered with alternative characters, including a non-descending 'J' that stops at the baseline, an 'M' that reaches the baseline, and a different amper-sand, similar to that used on Dwiggin's *Metro*.^[3]

Wolpe later designed *Pegasus*, a spiky serif design intended to complement *Albertus* with more body text-oriented proportions. It was less popular and had faded in popularity by the end of the metal type period, although Matthew Carter digitised it and added a bold and italic in 1980 as part of a commemorative exhibition project on Wolpe's work.

References

- ^[1] "Albertus Nova". Monotype. 10 October 2019. Retrieved 16 November 2019.
- ^[2] "Front cover" (PDF). *Monotype Recorder*. 34 (2): 1–2. 1935. Retrieved 16 September 2015.
- ^[3] Coles, Stephen; Fidlin, Noah (6 May 2015). "Parachutes by Coldplay". *Fonts In Use*. Retrieved 15 April 2016.



STYLE COMBINATIONS

LATERALLY

PLAGIARISE

MUTTERING

OUTSPREAD

EXTENSIBLE

BOOKWORM

REORGANISE

WINDOWING



STYLE COMBINATIONS

† ANNO 1532 †

¶ 72 § 94.8 {6}

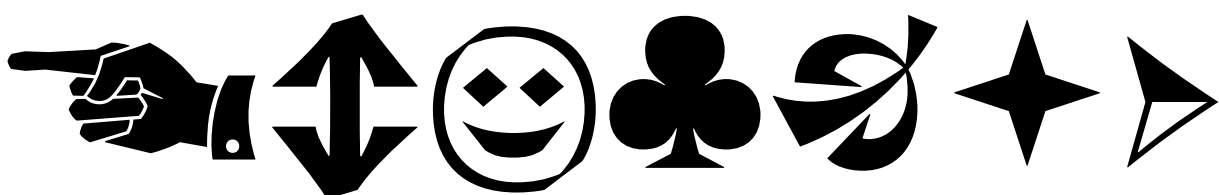
γ¹³/₁₆ ÷ π³ ≠ Σ 1

€1 ₣2 ₧3 ₨4

₹5 ₺6 ₪7 ₹8

④ ① ⑥ ③ ⑨ ⑤ ⑧

hí@m&u&i





CHARACTER SET

Uppercase

ABCDEFGHIJKLMN
OPQRSTUVWXYZ&Z

Lowercase

abcdefghijklmn
opqrstuvwxyz

Small Capitals

ABCDEFGHIJKLMN
OPQRSTUVWXYZ

Figures: Lining, Oldstyle, Superscript, Subscript, Numerators, Denominators

0123456789

0123456789

0123456789

0123456789

0123456789

0123456789



CHARACTER SET

Uppercase Latin Extended

À Á Ä Â Ã Ä Å Æ É Ê Ë Ç
 Ď Đ È É Ê Ë Ě Ě Ě Ě Ę Ğ Ğ Ğ Ğ Ğ Ğ Ğ Ğ
 Î Ï Ĵ ĵ Ķ Ļ Ľ Ľ Ľ Ľ Ľ Ľ Ľ Ľ Ľ Ľ Ľ Ľ
 Œ œ Ŕ Ŗ Ũ Ū Ŭ Ů Ű Ų ŷ ß
 Ŧ ŧ ù ú û ü ũ Ů Ű Ų ŷ ŷ
 Ŵ ŵ Ŷ ŷ Ÿ Ź ź Ż ż Ʒ ƹ ƺ

Lowercase Latin Extended

à á ä â ã ä å æ é ê ë ç đ đ đ
 è é ë ê ě ě ě ě Ę ğ ğ ğ ğ ħ ì í î ï ï ĵ ĵ
 Ĵ ĵ Ķ Ļ Ľ Ľ Ľ Ľ Ľ Ľ Ľ Ľ Ľ Ľ Ľ Ľ
 Œ œ Ŕ Ŗ Ũ Ū Ŭ Ů Ű Ų ŷ ß ŧ ŧ ŧ ŧ ù ú ü
 û ũ Ů Ű Ų ŷ ŷ ŷ ŷ Ÿ Ź ź Ż ż Ʒ ƹ ƺ
 ž į ģ



CHARACTER SET

Swash Capitals Latin Extended

À Á Ä Â Ã Ä Å Æ É Ê Ë Ç Ð Ñ
 Ò Ó Ô Õ Ö × Ø Ù Ú Û Ü Ý Þ ß à á â ã
 ä å æ ç è é ê ë ì í î ï ð ñ ò ó ô õ
 ö ø ù ú û ü ý þ ß à á â ã ä å æ ç è é ê ë
 ì í î ï ð ñ ò ó ô õ ö ø ù ú û ü ý þ ß

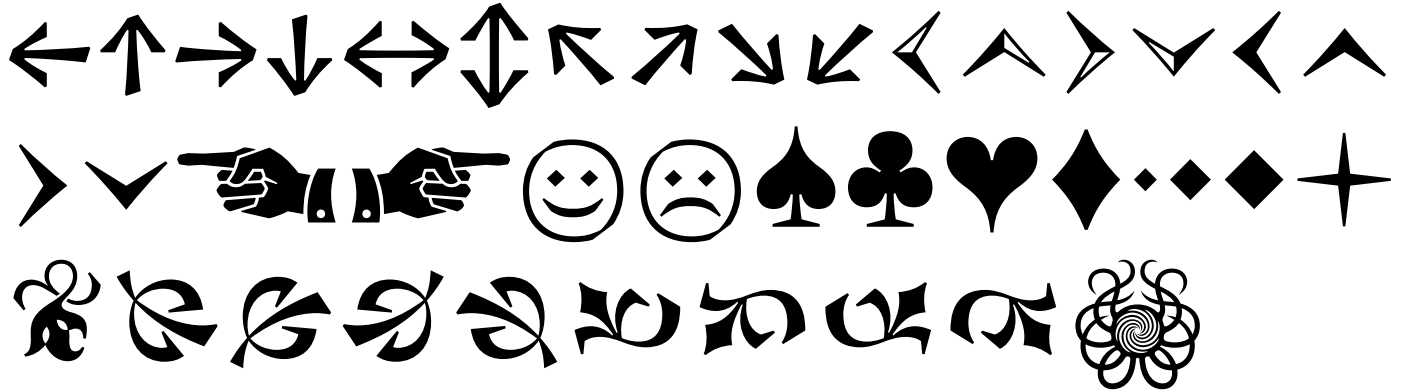
Alternates

À Á Ä Â Ã Ä Å Æ É Ê Ë Ç Ð Ñ
 Ò Ó Ô Õ Ö × Ø Ù Ú Û Ü Ý Þ ß à á â ã
 ä å æ ç è é ê ë ì í î ï ð ñ ò ó ô õ
 ö ø ù ú û ü ý þ ß à á â ã ä å æ ç è é ê ë
 ì í î ï ð ñ ò ó ô õ ö ø ù ú û ü ý þ ß



CHARACTER SET

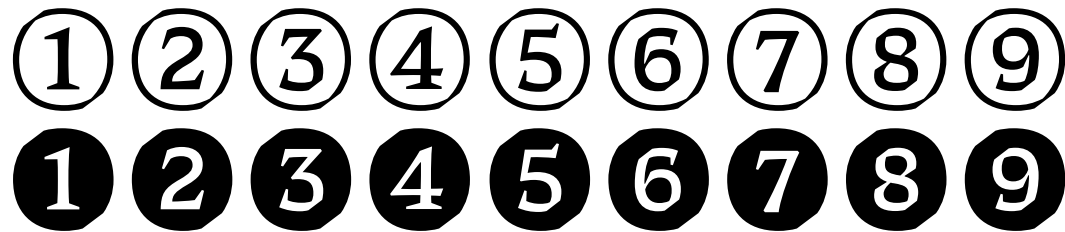
Arrows & Ornament



Uppercase Punctuation



Circled Numerals



OPENTYPE FEATURES

SS01: Alternate A

ARCHÆ → ARCHÆ

SS02: Alternate E

BESTED → BESTED

OPENTYPE FEATURESSS03: Alternate J

DAGJE → DAGJESS04: Alternate Q

QUIZED → QUIZEDSS05: Alternate U

GURUS → GURUSSS06: Alternate Dutch IJ

BLIJF → BLIJFStandard Ligatures

Differ → DifferDiscretionary Ligatures

LITTER → LITTEROldstyle Figures

EST 1984 → EST 1984

OPENTYPE FEATURES

Subscript, Superscript, and Arbitrary Fractions

C₂H₅OH π³⁵ 25¹⁸⁷/₂₉₉

Localized Forms

Ijspríjs → Ijspríjs
 rămășițele → rămășițele
 PARAL·LEL → PARAL·LEL
 VERILEN → VERİL

Case Sensitive Forms

{©Hi-ho}
 {©HI-HO}
 «Groß» ¿Si?
 «GROß» ¿SI?

OPENTYPE FEATURES

SS07: Circled Numbers

2 Milk → ② Milk

SS08: Negative Circled Numbers

3 Bread → ③ Bread

Small Capitals

Wonder → WONDER

Capitals to Small Capitals

FUNNY → FUNNY



LANGUAGES SUPPORTED

Abenaki	Frisian	Makhuwa	Sicilian
Afaan Oromo	Friulian	Malay	Silesian
Afar	Gagauz (Latin)	Maltese	Slovak
Afrikaans	Galician	Manx	Slovenian
Albanian	Ganda	Māori	Slovio (Latin)
Alsatian	Genoese	Marquesan	Somali
Amis	German	Megleno-Romanian	Sorbian (Lower Sorbian)
Anuta	Gikuyu	Meriam Mir	Sorbian (Upper Sorbian)
Aragonese	Gooniyandi	Mirandese	Sotho (Northern)
Aranese	Greenlandic (Kalaallisut)	Mohawk	Sotho (Southern)
Aromanian	Guadeloupean Creole	Moldovan	Spanish
Arrernte	Gwich'in	Montagnais	Sranan
Arvanitic (Latin)	Haitian Creole	Montenegrin	Sundanese (Latin)
Asturian	Hän	Murrinh-Patha	Swahili
Atayal	Hawaiian	Nagamese Creole	Swazi
Aymara	Hiligaynon	Nahuatl	Swedish
Azerbaijani	Hopi	Ndebele	Tagalog
Bashkir (Latin)	Hotçak (Latin)	Neapolitan	Tahitian
Basque	Hungarian	Ngiyambaa	Tetum
Belarusian (Latin)	Icelandic	Niuean	Tok Pisin
Bemba	Ido	Noongar	Tokelauan
Bikol	Igbo	Norwegian	Tongan
Bislama	Ilocano	Novial	Tshiluba
Bosnian	Indonesian	Occidental	Tsonga
Breton	Interglossa	Occitan	Tswana
Cape Verdean Creole	Interlingua	Old Icelandic	Tumbuka
Catalan	Irish	Old Norse	Turkish
Cebuano	Istro-Romanian	Oshiwambo	Turkmen (Latin)
Chamorro	Italian	Ossetian (Latin)	Tuvaluan
Chavacano	Jamaican	Palauan	Tzotzil
Chichewa	Javanese (Latin)	Papiamento	Uzbek (Latin)
Chickasaw	Jèrriais	Piedmontese	Venetian
Cimbrian	Kaingang	Polish	Vepsian
Cofán	Kala Lagaw Ya	Portuguese	Volapük
Cornish	Kapampangan (Latin)	Potawatomi	Võro
Corsican	Kaqchikel	Q'eqchi'	Wallisian
Creek	Karakalpak (Latin)	Quechua	Walloon
Crimean Tatar (Latin)	Karelian (Latin)	Rarotongan	Waray-Waray
Croatian	Kashubian	Romanian	Warlpiri
Czech	Kikongo	Romansh	Wayuu
Danish	Kinyarwanda	Rotokas	Welsh
Dawan	Kiribati	Sami (Inari Sami)	Wik-Mungkan
Delaware	Kirundi	Sami (Lule Sami)	Wiradjuri
Dholuo	Klingon	Sami (Northern Sami)	Wolof
Drehu	Kurdish (Latin)	Sami (Southern Sami)	Xavante
Dutch	Ladin	Samoan	Xhosa
English	Latin	Sango	Yapese
Esperanto	Latino sine Flexione	Saramaccan	Yindjibarndi
Estonian	Latvian	Sardinian	Zapotec
Faroese	Lithuanian	Scottish Gaelic	Zarma
Fijian	Lojban	Serbian (Latin)	Zazaki
Filipino	Lombard	Seri	Zulu
Finnish	Low Saxon	Seychellois Creole	Zuni
Folkspraak	Luxembourgish	Shawnee	
French	Maasai	Shona	



*The
End
&*