

THIS IS A SPECIMEN BY THE

Herzberg
Design Co

OF THE TYPEFACE NAMED

Cloisterfuch

AND REMEMBER

“FORTUNE FAVORS THE GOOFY”

INDEX

① About	p. 2
② Style Specimens	p. 3–7
③ Character Set	p. 8–12
④ OpenType Features	p. 13–14
⑤ Languages	p. 15

ABOUT

Name: Cloisterfuch

Styles: 1

Year Released: 2019

Genre: Blackletter

Formats: OTF, TTF, WOFF, WOFF2

Designer: Matthijs Herzberg

Cloisterfuch is a chunky, striking blackletter that takes the varying pen angles and waisted strokes found in calligraphic scripts and pushes them to an extreme. The result is an exaggerated, blocky face with personality, best viewed large on the page.

Cloisterfuch's letterforms draw mostly on Textura Quadrata, with a little Fraktur influence in the majuscules. This is especially manifest in their robust, curvaceous, pendulous "elephant trunks", a.k.a. "Schnorkels". Cloisterfuch's lowercase contains few such rounded strokes, as befits a traditional Textura.

This typeface is far from static, however. There are hardly any straight lines to be seen (only the hairline strokes, and even some of those are slightly waisted, such as the slash that defines the ø). Extreme flaring, waisting, and cupping can bestow a cartoonish quality on type. Cloisterfuch definitely walks that line, but doesn't cross it. The result is a friendlier, less relentlessly brutal type than a Schafstiefelgrotesk, for instance, although it's hardly the Blackletter Lite™ you'd find on a poppy nu-metal album cover.

The letter and counter spacing provide a fine balance of black and white on the page, with black emerging victorious. That balance, plus the thick wedge-shaped blood drops languorously dripping from the top strokes of the r, c, and the crossbar of the t, helps keep one's horror vacui4 in check.

Basically, if you're looking for a playful, beefy, mostly PG-rated blackletter display face, Cloisterfuch might just be the ticket.

Description by Grendl Löfkvist, Typographica 2019



↑ Calligraphy by Andrey Martinov, a source of inspiration for Cloisterfuch. Note the changes in nib angle, and the flaring created by overlapping and rotating strokes, which set it apart from run-of-the-mill blackletter.

**STYLES** lowercase 140pt

Zeichen

Alles

Charakter

Bestillt

Ausrot



STYLES uppercase 140pt

1 2 3 4 5

6 7 8 9 10

11 12 13 14 15

16 17 18 19 20

21 22 23 24 25



STYLES lowercase 90pt

Nasenzysten
Fostenpreise
Erntepflätzen
Zehnjahren
Gostiengeiß
Platinanteils
Angeriffene



STYLES uppercase 90pt

G H I J K L M N O
 P Q R S T U V W
 X Y Z Ä Å Æ Ç È
 É Ê Ë Ì Í Î Ï Ñ
 Ò Ó Ô Õ Ö × Ø Ù
 Ú Û Ü Ý Þ ß à á
 â ã

**STYLES**

90pt

T U F Z A N Z A T U S

76pt

The death drive

52pt

(German: 'Todestrieb')

40pt

is the drive toward death and destruction, often expressed

28pt

through behaviors such as aggression, repetition compulsion, and self-destructiveness. It was originally proposed by

20pt

Sabina Spielrein in her paper "Destruction as the Cause of Coming Into Being" (Die Destruktion als "Ursache des Werdens") in 1912, which was then taken up by Sigmund Freud in 1920 in Beyond the Pleasure Principle.



CHARACTER SET

Uppercase

A B C D E F G H I
 J K L M N O P Q R S
 T U V W X Y Z

Lowercase

a b c d e f g h i j k l m n
 o p q r s t u v w x y z

Figures (Lining & Oldstyle)

0 1 2 3 4 5 6 7 8 9
 0 1 2 3 4 5 6 7 8 9



CHARACTER SET

Uppercase Latin Extended

À Á Â Ã Ä Å Æ Ç È É Ê Ë
 Ì Í Î Ï Ñ Ò Ó Ô Õ Ö × Ø Ù Ú
 Û Ü Ý Þ ß à á â ã
 ä å æ ç è é ê ë ì í î ï
 ð ñ ò ó ô õ ö ÷ ø ù ú
 û ü ý þ ÿ à á â ã
 ä å æ ç è é ê ë ì í î ï
 ð ñ ò ó ô õ ö ÷ ø ù ú
 û ü ý þ ÿ



CHARACTER SET

Lowercase Latin Extended

à á â ã ä å æ ç è é ê ë
 ð ñ ò ó ô õ ö ø ù ú û ü
 ý ÿ ž ı ħ ĩ ĵ ħ ĩ ĵ ħ
 ħ ĩ ĵ ħ ĩ ĵ ħ ĩ ĵ ħ ĩ
 ħ ĩ ĵ ħ ĩ ĵ ħ ĩ ĵ ħ ĩ
 ħ ĩ ĵ ħ ĩ ĵ ħ ĩ ĵ ħ ĩ
 ħ ĩ ĵ ħ ĩ ĵ ħ ĩ ĵ ħ ĩ
 ħ ĩ ĵ ħ ĩ ĵ ħ ĩ ĵ ħ ĩ

Swash Caps, Alternate “h” & Historical Alternates

€ £ ¥ ₣ ₧ ₨ ₩

Currency Symbols

€ £ ¥ ₣ ₧ ₨ ₩

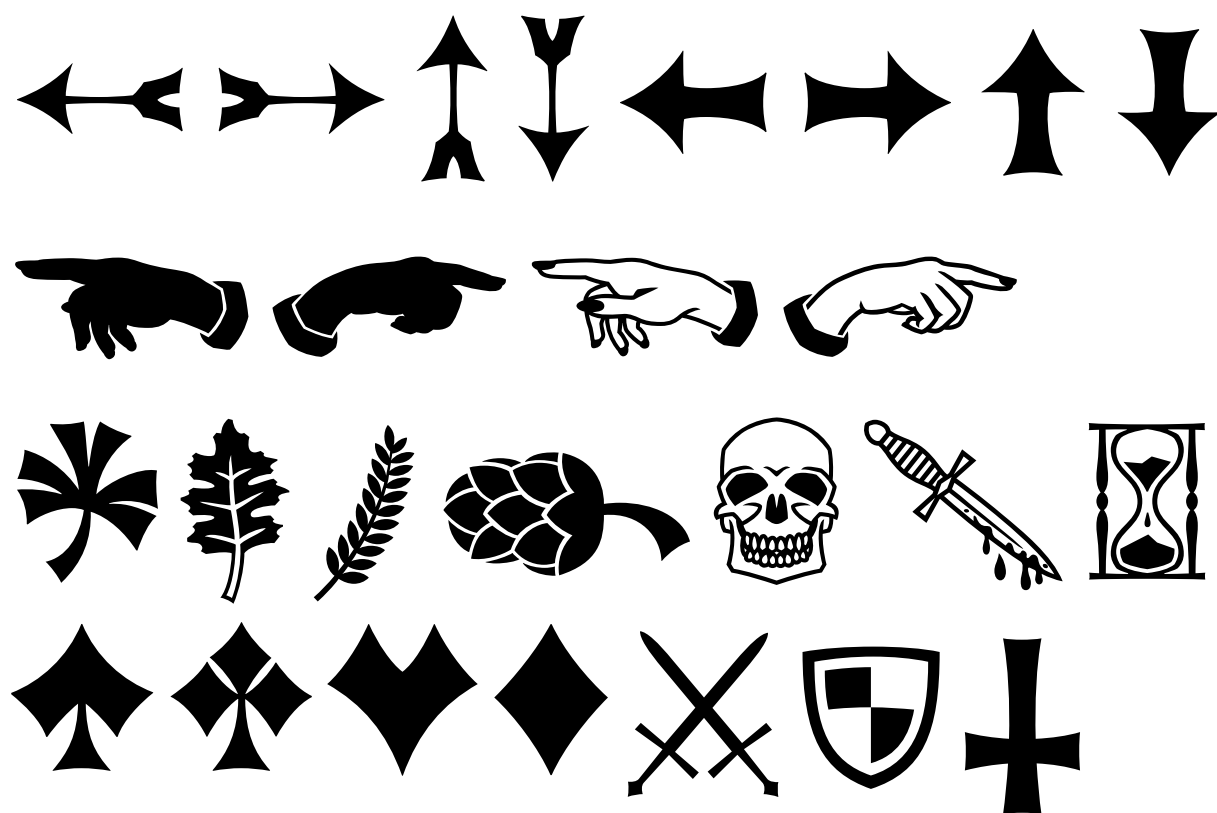


CHARACTER SET

Standard & Discretionary Ligatures

fi fl fr fe ff fh
 ch ck hf te tz
 ta ta fa

Arrows & Ornament



OPENTYPE FEATURES

Standard & Discretionary Ligatures

The Hertz Office



The Hertz Office

Alternate "h"

Wach → Wach

Swash Caps

Quick → Quick

Historical forms

Woriz → Woriz

Precomposed Fractions

24 1/3 → 24 1/3

OPENTYPE FEATURES

Oldstyle Figures

1+2=3 → 1+2=3


Localized Forms

ſprijſ → ſprijſ
 mäsigele → mäsigele
 paral-lel → parallel

Case Sensitive Punctuation

{ſi-ho} «Groß» iſi
 {ſi-ho} «Groß» iſi

Code-Activated Dingbats

:skull: → 



LANGUAGES SUPPORTED

Abenaki	Frisian	Makhuwa	Sicilian
Afaan Oromo	Friulian	Malay	Silesian
Afar	Gagauz (Latin)	Maltese	Slovak
Afrikaans	Galician	Manx	Slovenian
Albanian	Ganda	Māori	Slovio (Latin)
Alsatian	Genoese	Marquesan	Somali
Amis	German	Megleno-Romanian	Sorbian (Lower Sorbian)
Anuta	Gikuyu	Meriam Mir	Sorbian (Upper Sorbian)
Aragonese	Gooniyandi	Mirandese	Sotho (Northern)
Aranese	Greenlandic (Kalaallisut)	Mohawk	Sotho (Southern)
Aromanian	Guadeloupean Creole	Moldovan	Spanish
Arrernte	Gwich'in	Montagnais	Sranan
Arvanitic (Latin)	Haitian Creole	Montenegrin	Sundanese (Latin)
Asturian	Hän	Murrinh-Patha	Swahili
Atayal	Hawaiian	Nagamese Creole	Swazi
Aymara	Hiligaynon	Nahuatl	Swedish
Azerbaijani	Hopi	Ndebele	Tagalog
Bashkir (Latin)	Hotçak (Latin)	Neapolitan	Tahitian
Basque	Hungarian	Ngiyambaa	Tetum
Belarusian (Latin)	Icelandic	Niuean	Tok Pisin
Bemba	Ido	Noongar	Tokelauan
Bikol	Igbo	Norwegian	Tongan
Bislama	Ilocano	Novial	Tshiluba
Bosnian	Indonesian	Occidental	Tsonga
Breton	Interglossa	Occitan	Tswana
Cape Verdean Creole	Interlingua	Old Icelandic	Tumbuka
Catalan	Irish	Old Norse	Turkish
Cebuano	Istro-Romanian	Oshiwambo	Turkmen (Latin)
Chamorro	Italian	Ossetian (Latin)	Tuvaluanv
Chavacano	Jamaican	Palauan	Tzotzil
Chichewa	Javanese (Latin)	Papiamento	Uzbek (Latin)
Chickasaw	Jèrriais	Piedmontese	Venetian
Cimbrian	Kaingang	Polish	Vepsian
Cofán	Kala Lagaw Ya	Portuguese	Volapük
Cornish	Kapampangan (Latin)	Potawatomi	Võro
Corsican	Kaqchikel	Q'eqchi'	Wallisian
Creek	Karakalpak (Latin)	Quechua	Walloon
Crimean Tatar (Latin)	Karelian (Latin)	Rarotongan	Waray-Waray
Croatian	Kashubian	Romanian	Warlpiri
Czech	Kikongo	Romansh	Wayuu
Danish	Kinyarwanda	Rotokas	Welsh
Dawan	Kiribati	Sami (Inari Sami)	Wik-Mungkan
Delaware	Kirundi	Sami (Lule Sami)	Wiradjuri
Dholuo	Klingon	Sami (Northern Sami)	Wolof
Drehu	Kurdish (Latin)	Sami (Southern Sami)	Xavante
Dutch	Ladin	Samoan	Xhosa
English	Latin	Sango	Yapese
Esperanto	Latino sine Flexione	Saramaccan	Yindjibarndi
Estonian	Latvian	Sardinian	Zapotec
Faroese	Lithuanian	Scottish Gaelic	Zarma
Fijian	Lojban	Serbian (Latin)	Zazaki
Filipino	Lombard	Seri	Zulu
Finnish	Low Saxon	Seychellois Creole	Zuni
Folkspraak	Luxembourgish	Shawnee	
French	Maasai	Shona	



The
End

